

*SPECIAL SIZE FRAMES*



**Shaded Dark Gunmetal HR4820/3011**  
Frame also available in Rose, Metallic Light Blue and Shaded Gold. See ordering information for order number.



**Aviator Gold FR6016/3008**  
Frame only available in Shaded Gold. See ordering information for order number.

*OVAL, HALF-RIM FRAMES*



**Lavender HR5117/3039**  
Frame also available in Rose, Light Blue, Shaded Gold and Dark Blue. See ordering information for order number.



**Shaded Dark Blue HR5117/3059**  
Frame also available in Rose, Light Blue, Shaded Gold and Lavender. See ordering information for order number.

*RECTANGULAR, HALF-RIM & FULL-RIM*



**Metallic Silver HR5319/3068**  
Frame also available in Shaded Gold, Metallic Brown and Shaded Dark Gunmetal. See ordering information for order number.



**Metallic Brown FR5319/3091**  
Frame also available in Metallic Silver. See ordering information for order number.

## Non-Hinged Frames



Rose NHHR5117/3116

Our NON-Hinge frames are available in lens sizes 48/20, 51/17 and 53/19. Available colors vary by lens size.

Lens size 48/20: Shaded Gold, Shaded Dark Gunmetal, Rose.

Lens size 51/17: Shaded Gold, Rose.

Lens size 53/19: Shaded Gold, Shaded Dark Gunmetal.

Please see Product Ordering Information on back panel.

## SPECIFICATIONS

**Lenses:** Frames are shipped with clear plastic lenses (lenses are not optical grade). Prescription lenses must be purchased from your eye care professional.

**Accessories:** Frames ship with one single-lumen and one double-lumen connecting tube as well as twelve nasal prongs (six pairs).

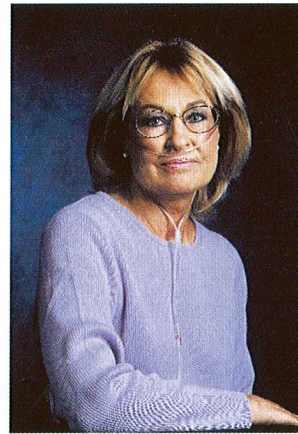
**Flow Rate:** The maximum flow rate is 5 liters per minute. When using extension tubing - flow rates may vary. Always check with your physician or respiratory therapist to ensure proper oxygenation. The purchase of a finger pulse oximeter should be considered. Check with your physician.

**Material:** Frames: Metal      Tubing and Nasal Prongs: PVC

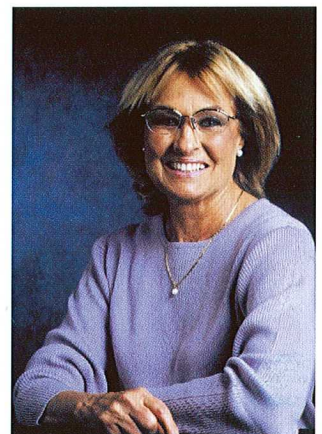
**Weight:** Approx. 1.0 oz. (without lenses)

**Warranty:** One year from date of purchase (frames only).

Colors may vary from those depicted in this booklet. Available styles and colors subject to change.

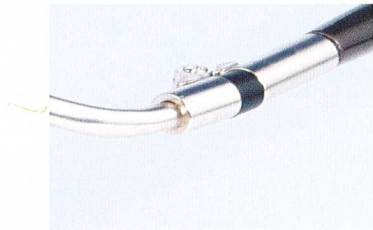


Before  
with Nasal Cannula



After  
NO Nasal Cannula

## Hinge Types

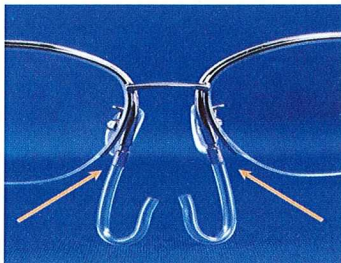


View of Hinge with rubber seal

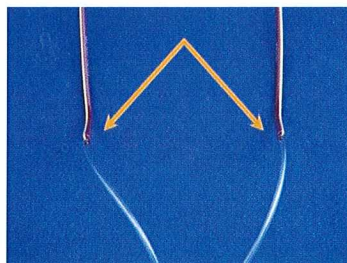


View of Non-Hinge frame

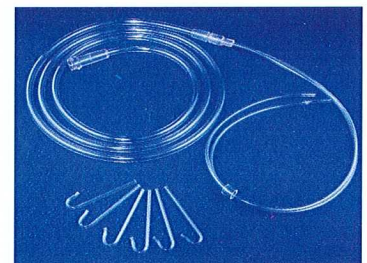
## Tubing and tubing connections



Replaceable nasal prongs (J tubes) connect to the frames near the nose pads.



Supply tubing connects to each temple, just aft of the ear pads.



Nasal prongs and oxygen supply tubing. Available in single or double lumen tubing style.

## ORDERING INFORMATION

When ordering frames please review all photos to determine desired color,  
then select correct order number below.

| Reorder Number                                      | Color  | Frame Size (Width)   | "B" (Height) |
|---|--|----------------------|--------------|
| <b>Special Frames, Lens Sizes 48/20 &amp; 60/16</b> |  |                      |              |
| HR4820/3008   | Shaded Gold  | 123.69 mm (4.87 in.) | 32 mm        |
| HR4820/3011   | Shaded Dark Gunmetal   | 123.69 mm (4.87 in.) | 32 mm        |
| HR4820/3116   | Rose   | 123.69 mm (4.87 in.) | 32 mm        |
| HR4820/3062   | Metallic Light Blue  | 123.69 mm (4.87 in.) | 32 mm        |
| FR6016/3008   | Shaded Gold, Aviator Style   | 145.20 mm (5.72 in.) | 48 mm        |
| <b>Special Frames, Non-Hinged, Lens size 48/20</b>  |  |                      |              |
| NHHR4820/3008                                       | Shaded Gold  | 123.69 mm (4.87 in.) | 32 mm        |
| NHHR4820/3011                                       | Shaded Dark Gunmetal   | 123.69 mm (4.87 in.) | 32 mm        |
| NHHR4820/3116                                       | Rose   | 123.69 mm (4.87 in.) | 32 mm        |
| <b>Oval, Half-Rim, Lens Size 51/17</b>              |  |                      |              |
| HR5117/3008   | Shaded Gold  | 133.35 mm (5.25 in.) | 36 mm        |
| HR5117/3116   | Rose   | 133.35 mm (5.25 in.) | 36 mm        |
| HR5117/3039   | Lavender   | 133.35 mm (5.25 in.) | 36 mm        |
| HR5117/3059   | Shaded Dark Blue   | 133.35 mm (5.25 in.) | 36 mm        |
| HR5117/3062   | Metallic Light Blue  | 133.35 mm (5.25 in.) | 36 mm        |
| <b>Oval, Half-Rim Non-Hinged, Lens size 51/17</b>   |  |                      |              |
| NHHR5117/3008                                       | Shaded Gold  | 133.35 mm (5.25 in.) | 36 mm        |
| NHHR5117/3116                                       | Rose   | 133.35 mm (5.25 in.) | 36 mm        |
| <b>Rectangular, Half-Rim, Lens Size 53/19</b>       |  |                      |              |
| HR5319/3008   | Shaded Gold  | 142.78 mm (5.62 in.) | 38 mm        |
| HR5319/3011   | Shaded Dark Gunmetal   | 142.78 mm (5.62 in.) | 38 mm        |
| HR5319/3068   | Metallic Silver  | 142.78 mm (5.62 in.) | 38 mm        |
| HR5319/3091   | Metallic Brown   | 142.78 mm (5.62 in.) | 38 mm        |
| <b>Rectangular, Full-Rim, Lens Size 53/19</b>       |  |                      |              |
| FR5319/3068   | Metallic Silver  | 142.78 mm (5.62 in.) | 38 mm        |
| FR5319/3091   | Metallic Brown   | 142.78 mm (5.62 in.) | 38 mm        |
| <b>Oval, Half-Rim Non-Hinged, Lens Size 53/19</b>   |  |                      |              |
| NHHR5319/3008                                       | Shaded Gold  | 142.78 mm (5.65 in.) | 38 mm        |
| NHHR5319/3011                                       | Shaded Dark Gunmetal   | 142.78 mm (5.65 in.) | 38 mm        |
| OVT-3   | Single Lumen Tubing Set, 6-month supply, 7 feet (3 hoses, 36 prongs) |                      |              |
| OVT-3-4   | Single Lumen Tubing Set, 6-month supply, 4 feet (3 hoses, 36 prongs) |                      |              |
| OVDT-3  | Double Lumen Tubing Set, 6-month supply, 8 feet (3 hoses, 36 prongs) |                      |              |
| OVDT-3-4  | Double Lumen Tubing Set, 6-month supply, 4 feet (3 hoses, 36 prongs) |                      |              |
| OVN-24  | Nasal Prongs (24 prongs)   |                      |              |

**Toll Free to order 877-699-8439**



US Patent 6,886,562 (other patents pending)

109 Inverness Drive East, Suite C  
Englewood, Colorado 80112-5105  
Toll Free: 877-699-8439 P: 303-768-8681 F: 303-790-4588  
www.oxyview.com Email: cservice@oxyview.com P0908